

# CAM OPERATED SWITCH



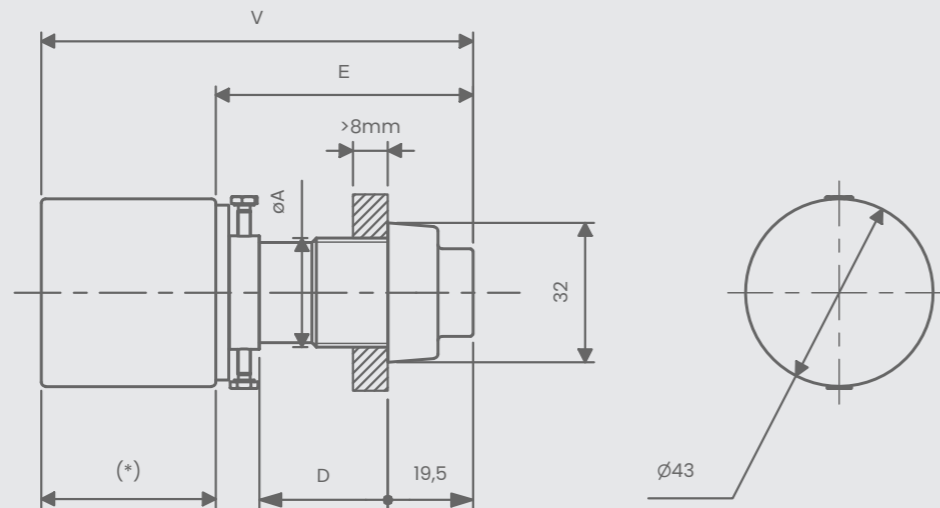
## Series H5

- Rotary CAM switch with triangle key
- Body in nickel plated brass and other parts in plastic PA6
- Rate degree of protection: IP66
- Cable cross section: 1.5 ÷ 2.5 mm<sup>2</sup>
- Rated insulation voltage: 750V
- Max voltage: 660V
- Max rated operational current: 25A
- AC1 max current value: 16A
- AC3 max current value: 6A
- Max rated power for 3-phase motor 50/60Hz at 380-440V: 5,5 kW

Operating temperature	ATEX Certificate	IECEX Certificate
- 50°C ÷ + 180°C	INERIS 14 ATEX 9016U	IECEX INE 14.0055U

ATEX & IECEX Equipment Data		
<b>Gas</b>	Group I Zone 1	Ex II 2G Ex db IIC or IIB+H2 Gb
<b>Dust</b>	Group II Zone 21	Ex II 2D Ex tb IIIC Db IP66
<b>Mine</b>	Group I	Ex I M2 Ex db I Mb

TRIANGLE KEY SWITCH



\* Length changes according to the type of contact chosen

Code	Ø A Threading	D	E	V	Weight (g)
<b>RX20H5</b>	M20x1.5 - 6g	14.5	44	72.5 ÷ 97	76
<b>RX25H5</b>	M25x1.5 - 6g	14.5	44	72.5 ÷ 97	107
<b>RS20H5</b>	M20x1.5 - 6g	29.5	59	87.5 ÷ 112	87
<b>RS25H5</b>	M25x1.5 - 6g	29.5	59	87.5 ÷ 112	139

# CAM OPERATED SWITCH

RS SERIES	RX SERIES
<b>Suitable for Ex d electrical enclosure</b> IIB+H2 Internal Volume < 160,6 dm <sup>3</sup> IIC Internal Volume < 62,9 dm <sup>3</sup>	<b>Suitable for Ex d electrical enclosure</b> IIB+H2 Internal Volume < 2 dm <sup>3</sup> IIC Internal Volume < 2 dm <sup>3</sup>

ORDER CODING		
Code		Electrical contact
RX20H5		K1002
RX25H5		K1003
RS20H5	+	K2003
RS25H5		K2023
		K3004
		K3021

Example: RX25H5-K1002

- Body and ring in stainless steel AISI 316L
- Operating temperature: -60°C ÷ +180°C

## INOX VERSION



ORDER CODING		
Codice		Electrical contact
RXI20H5		K1002
RXI25H5		K1003
RSI20H5	+	K2003
RSI25H5		K2023
		K3004
		K3021

Example: RSI25M5B-K1002