

P Series

The bulkheads series P have a protection against dangerous gas and dust (IIB+H2 or IIC and IIIC) with IP64 protection and allow gas or liquid passage from inside to outside explosion proof enclosure guaranteeing flame's lamination thanks to an internal calibrated insert with a suitable length for this purpose.

Features

Material used: stainless steel AISI 316L

Operating temperature: -60°C up to 60°C

ISO 262 thread: M12x1.5 to M25x1.5

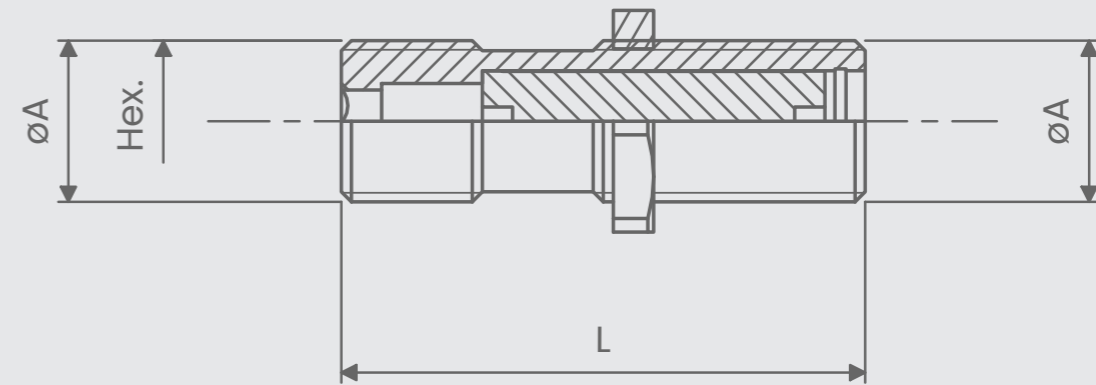
Degree of protection: IP66



ATEX & IECEx Equipment Data		
Gas	Group II Zone 1	Ex d I Mb Ex d II (*) Gb Ex e IIC Gb
Dust	Group II Zone 21	Ex tb IIIC Db IP64
ATEX Certificate		IECEx Certificate
INERIS 14 ATEX 9014U		IECEx INE 14.0045U

(*) - **IIB + H2** when installed on Ex d enclosure with maximum internal volume of 160,6 dm³
 - **IIC** when installed on enclosure with maximum internal volume of 62.9 dm³

P Series



Code	øA	L(*)	Hex.
P12S-52	M12x1.5	52	5
P12S-70	M12x1.5	70	5
P16S-52	M16x1.5	52	6
P16S-70	M16x1.5	70	6
P20S-52	M20x1.5	52	10
P20S-70	M20x1.5	70	10
P25S-52	M25x1.5	52	12
P25S-70	M25x1.5	70	12

(*) Dimension L may change according to customer requirements.

REDUCERS MALE - FEMALE

Reducer Male-Female required for the installation of bulkheads on entries enclosures with diameter reduced

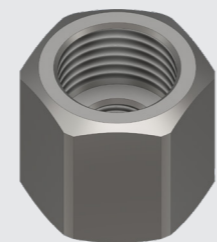
Code	Male entry	Female entry
PFM16M14GS	1/4" G	M16x1.5
PFM20M14GS	1/4"G	M20x1.5



REDUCERS FEMALE - FEMALE

Reducer Female-Female required for the installation of bulkheads on entries enclosures with diameter reduced

Code	Female entry A	Female entry B
PF128S	ISO M12x1.5	ISO M8x1.5
PF1612S	ISO M16x1.5	ISO M12x1.5
PF2016S	ISO M20x1.5	ISO M16x1.5
PF2520S	ISO M25x1.5	ISO M20x1.5
PF12M18NS	ISO M12x1.5	1/8" NPT
PF16M14NS	ISO M16x1.5	1/4" NPT
PF20M38NS	ISO M20x1.5	3/8" NPT
PF25M1NS	ISO M25x1.5	1/2" NPT



LOCKNUT SERIES DL

Useful in order to avoid the loosening of bulkheads and for the installation on Ex e enclosures with reduced thickness

Code	ISO Dimensions
DL12S	M12x1.5
DL16S	M16x1.5
DL20S	M20x1.5
DL25S	M25x1.5



GASKET SERIES SW

Useful to ensure the IP protection of enclosures on which the bulkheads are installed

Code	ISO Dimensions
SW12T	M12x1.5
SW16T	M16x1.5
SW20T	M20x1.5
SW25T	M25x1.5

