



RIBCO

# EXPLOSION PROOF EQUIPMENT

CATALOGO 2021

Certified by

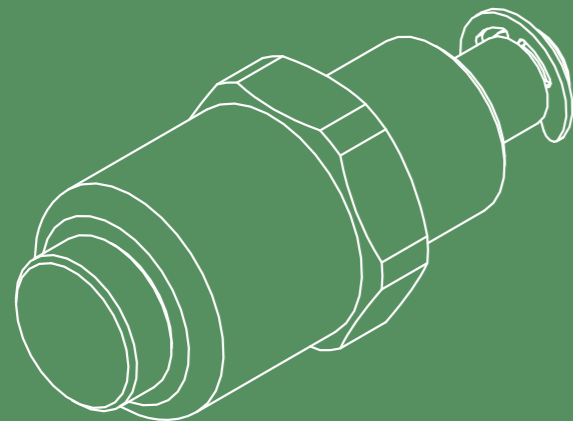


# R Drain and breath devices

4

The devices series VD & VDF are draining or breathing devices to be installed on junction boxes in classified area Zone 1 & Zone 21. The device allow the fluid passage (draining function) or the air passage (breathing function) from the internal to the external of the enclosure.

All products are certified:



DRAIN AND BREATH DEVICES



VDF pag. 6



VD pag. 10



P pag. 12

VDF Series

Series VDF are draining or breathing devices with manual opening and closing operation. The device allow the fluid passage (draining function) or the air passage (breathing function) from the internal to the external of an explosion proof enclosure.

Features

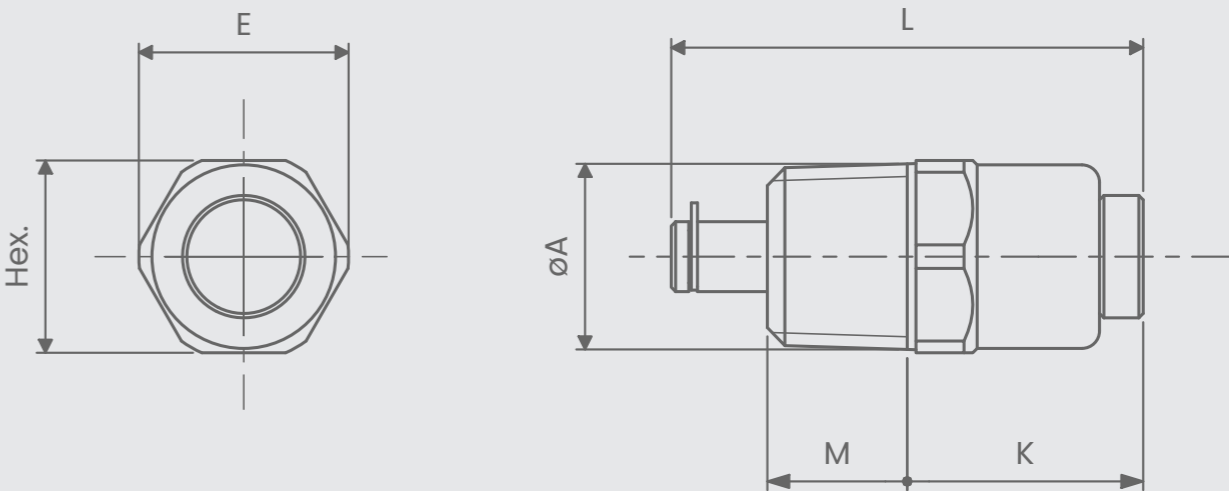
- Material used: stainless steel AISI 316L
- Operating temperature:-60°C up to 60°C
- NPT thread: 3/8" or to 1/2"
- ISO 262 thread: M16x1.5 or M20x1.5
- Degree of protection: IP66



ATEX & IECEx Equipment Data		
Gas	Group II Zone 1	Ex d I Mb Ex d II (*) Gb Ex e IIC Gb
Dust	Group II Zone 21	Ex tb IIIC Db IP66
ATEX Certificate		IECEx Certificate
INERIS 14 ATEX 9014U		IECEx INE 14.0045U

(\*) - IIB + H2 when installed on Ex d enclosure with maximum intrnal volume of 160,6 dm³  
- IIC when installed on enclosure with maximum internal volume of 62.9 dm³

VDF Series

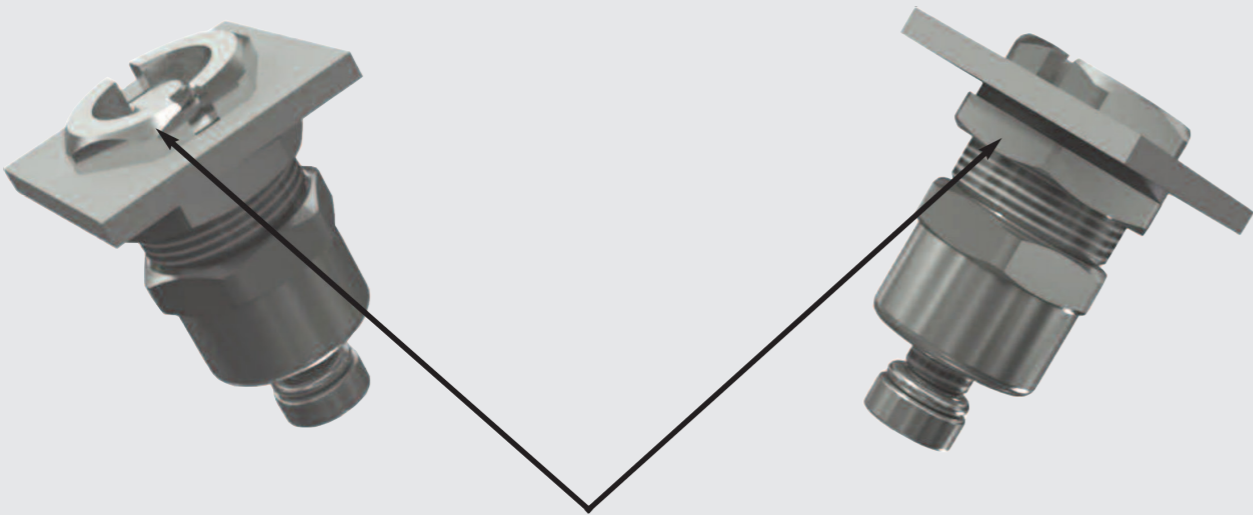
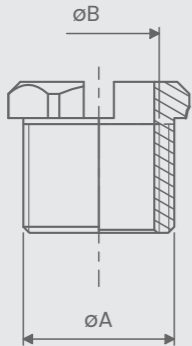


Code	ØA	M	K	Hex.	E	L
VDF38S	3/8" NPT	12	27	17	19	55
VDF1S	1/2" NPT	16	23	22	24	55
VDF16S	M16x1.5	12	27	22	24	55
VDF20S	M20x1.5	16	23	27	30	55

THREADING ADAPTOR SERIES VD04

Adaptor Male-female required for installation of draining valves on Ex e enclosures with reduced tichness. See figure below.

Dimension øA[ISO]	Code	Dimension øB[ISO]	Code	Dimension øB[NPT]
M20x1.5	VD0416S	M16x1.5	VD0438S	3/8"
M25x1.5	VD0420S	M20x1.5	VD041S	1/2"



LOCKNUT SERIES DL

Useful in order to avoid the loosening of bulkheads and for the installation on Ex e eclosures with reduced thickness

Code	ISO Dimensions
DL12S	M12x1.5
DL16S	M16x1.5
DL20S	M20x1.5
DL25S	M25x1.5



GASKET SERIES SW

Useful to ensure the IP protection of enclosures on wich the bulkheads are installed

Code	ISO Dimensions
SW12T	M12x1.5
SW16T	M16x1.5
SW20T	M20x1.5
SW25T	M25x1.5



VD Series

Series VD are draining and breathing devices. The devices allow the fluid passage (draining function) or the air passage (breathing function) from the internal to the external of an explosion proof enclosure.

Features

- Material used: stainless steel AISI 316L
- Operating temperature:-60°C up to 60°C
- NPT thread: 3/8" or to 1/2"
- ISO 262 thread: M16x1.5 or M20x1.5
- Degree of protection: IP66

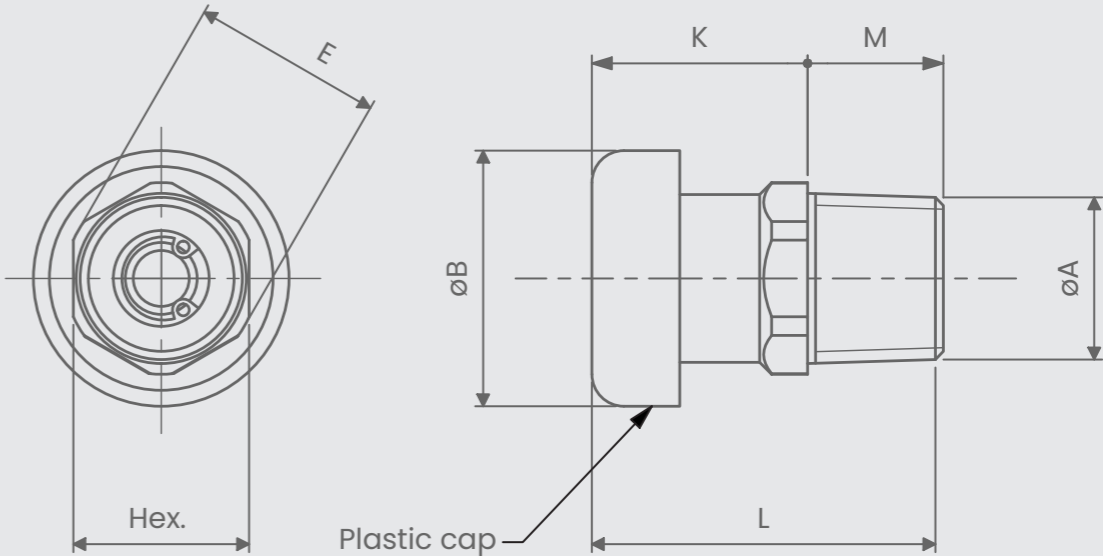


ATEX & IECEx Equipment Data		
Gas	Group II Zone 1	Ex d I Mb Ex d II (*) Gb Ex e IIC Gb
Dust	Group II Zone 21	Ex tb IIIC Db IP66 (*)
ATEX Certificate		IECEx Certificate
INERIS 14 ATEX 9014U		IECEx INE 14.0045U

(\*) - IIB + H2 when installed on Ex d enclosure with maximum intrnal volume of 160,6 dm³  
- IIC when installed on enclosure with maximum internal volume of 62.9 dm³

(\*\*) - The protection index IP66 is guaranteed only when the plastic cap (VD03) is applicated on the valve and when the valve is applicated vertically. Conversely the protection index is IP64.

VD Series



Code	ØA	ØB	M	K	Hex.	E	L
VD38S	3/8" NPT	27	13	31	17	19	44
VD1S	1/2" NPT	32	17	27	22	24	44
VD16S	M16x1.5	32	13	31	22	24	44
VD20S	M20x1.5	37	17	27	27	30	44

P Series

The bulkheads series P have a protection against dangerous gas and dust (IIB+H2 or IIC and IIIC) with IP64 protection and allow gas or liquid passage from inside to outside explosion proof enclosure guaranteeing flame’s lamination thanks to an internal calibrated insert with a suitable length for this purpose.

Features

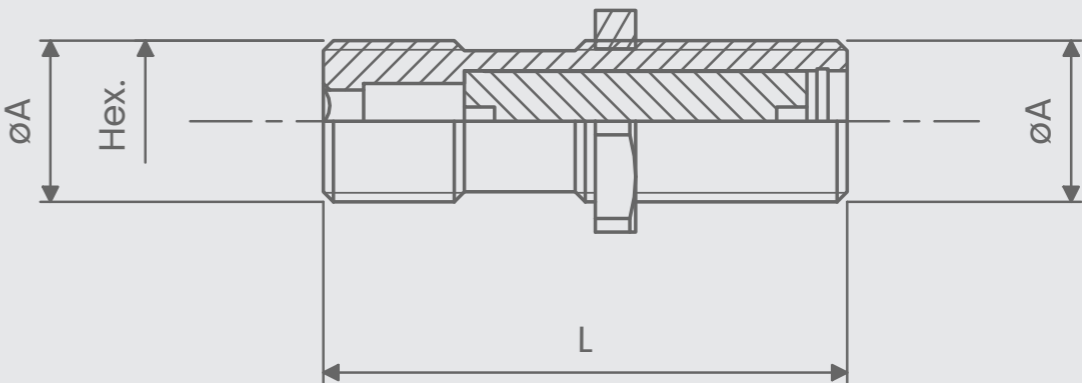
- Material used: stainless steel AISI 316L
- Operating temperature: -60°C up to 60°C
- ISO 262 thread: M12x1.5 to M25x1.5
- Degree of protection: IP66



ATEX & IECEx Equipment Data		
Gas	Group II Zone 1	Ex d I Mb Ex d II (*) Gb Ex e IIC Gb
Dust	Group II Zone 21	Ex tb IIIC Db IP64
ATEX Certificate		IECEx Certificate
INERIS 14 ATEX 9014U		IECEx INE 14.0045U

(\*) - IIB + H2 when installed on Ex d enclosure with maximum intrnal volume of 160,6 dm³  
- IIC when installed on enclosure with maximum internal volume of 62.9 dm³

P Series



Code	ØA	L(*)	Hex.
P12S-52	M12x1.5	52	5
P12S-70	M12x1.5	70	5
P16S-52	M16x1.5	52	6
P16S-70	M16x1.5	70	6
P20S-52	M20x1.5	52	10
P20S-70	M20x1.5	70	10
P25S-52	M25x1.5	52	12
P25S-70	M25x1.5	70	12

(\*) Dimension L may change according to customer requirements.

REDUCERS MALE – FEMALE

Reducer Male-Female required for the installation of bulkheads on entries enclosures with diameter reduced

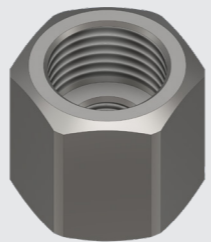
Code	Male entry	Female entry
PFM16M14GS	1/4" G	M16x1.5
PFM20M14GS	1/4"G	M20x1.5



REDUCERS FEMALE – FEMALE

Reducer Female-Female required for the installation of bulkheads on entries enclosures with diameter reduced

Code	Female entry A	Female entry B
PF128S	ISO M12x1.5	ISO M8x1.5
PF1612S	ISO M16x1.5	ISO M12x1.5
PF2016S	ISO M20x1.5	ISO M16x1.5
PF2520S	ISO M25x1.5	ISO M20x1.5
PF12M18NS	ISO M12x1.5	1/8" NPT
PF16M14NS	ISO M16x1.5	1/4" NPT
PF20M38NS	ISO M20x1.5	3/8" NPT
PF25M1NS	ISO M25x1.5	1/2" NPT



LOCKNUT SERIES DL

Useful in order to avoid the loosening of bulkheads and for the installation on Ex e enclosures with reduced thickness

Code	ISO Dimensions
DL12S	M12x1.5
DL16S	M16x1.5
DL20S	M20x1.5
DL25S	M25x1.5



GASKET SERIES SW

Useful to ensure the IP protection of enclosures on wich the bulkheads are installed

Code	ISO Dimensions
SW12T	M12x1.5
SW16T	M16x1.5
SW20T	M20x1.5
SW25T	M25x1.5

