

NIPPLES

NP Series

The Nipples Series NP are used to joint together equipments or other reducers with female entry.

Features

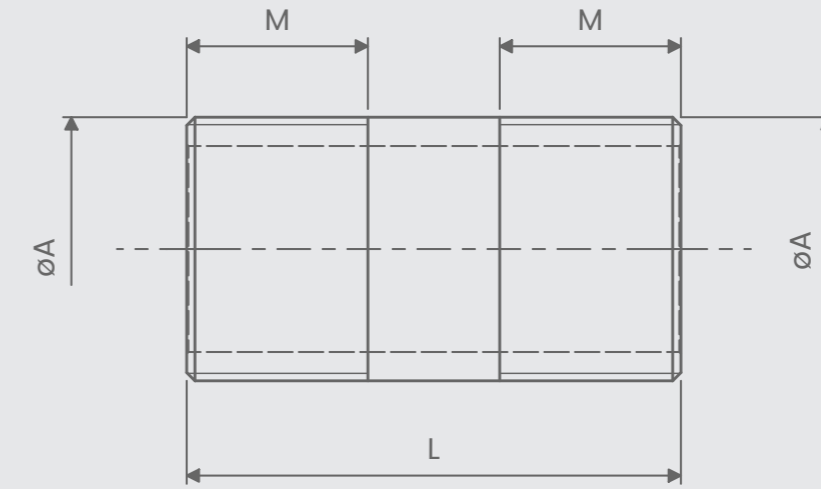
Material used: nickel plated brass CW614N

Operating temperature: -60°C up to 180°C

NPT thread: from 3/8" up to 3"

ISO 262 thread: from M16x1.5 up to M90x1.5

Degree of protection: IP66



ATEX & IECEx Equipment Data

Gas Group II Zone 1 Ex d I Mb Ex d IIC Gb Ex e IIC Gb

Dust Group II Zone 21 Ex tb IIIC Db IP66

ATEX Certificate

INERIS 14 ATEX 0029X

IECEx Certificate

IECEx INE 14.0038X

Options available

- Stainless steel AISI 316L construction
- Aluminium construction (available on demand)
- Galvanized steel construction (available on demand)

NIPPLES

Code	ØA	M	L
NP38B	3/8" NPT	16	40
NP1B	1/2" NPT	18	50
NP2B	3/4" NPT	18	50
NP3B	1" NPT	23	60
NP4B	1.1/4" NPT	23	60
NP5B	1.1/2" NPT	23	60
NP6B	2" NPT	23	60
NP7B	2.1/2" NPT	28	70
NP8B	3" NPT	28	70
NP16B	M16x1.5	16	40
NP20B	M20x1.5	16	50
NP25B	M25x1.5	16	50
NP32B	M32x1.5	16	60
NP40B	M40x1.5	18	60
NP50B	M50x1.5	18	60
NP63B	M63x1.5	18	60
NP75B	M75x1.5	20	70
NP90B	M90x1.5	20	70