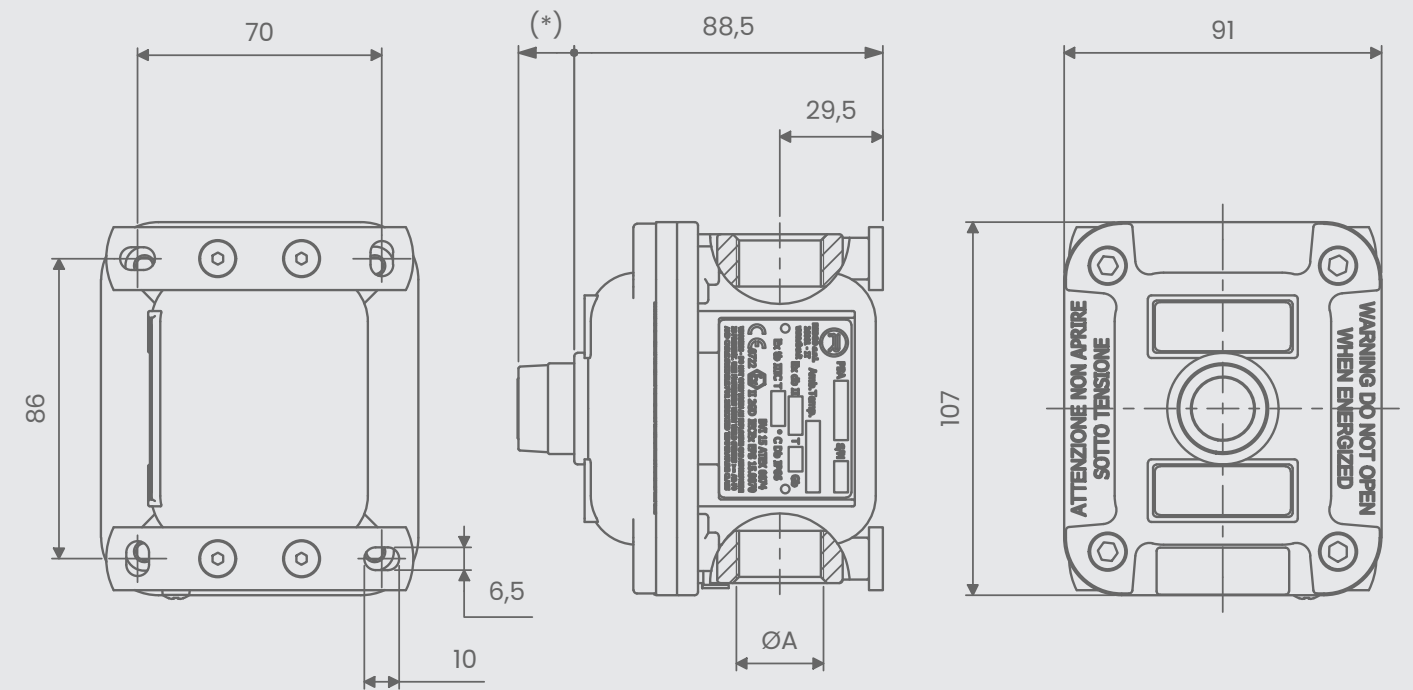
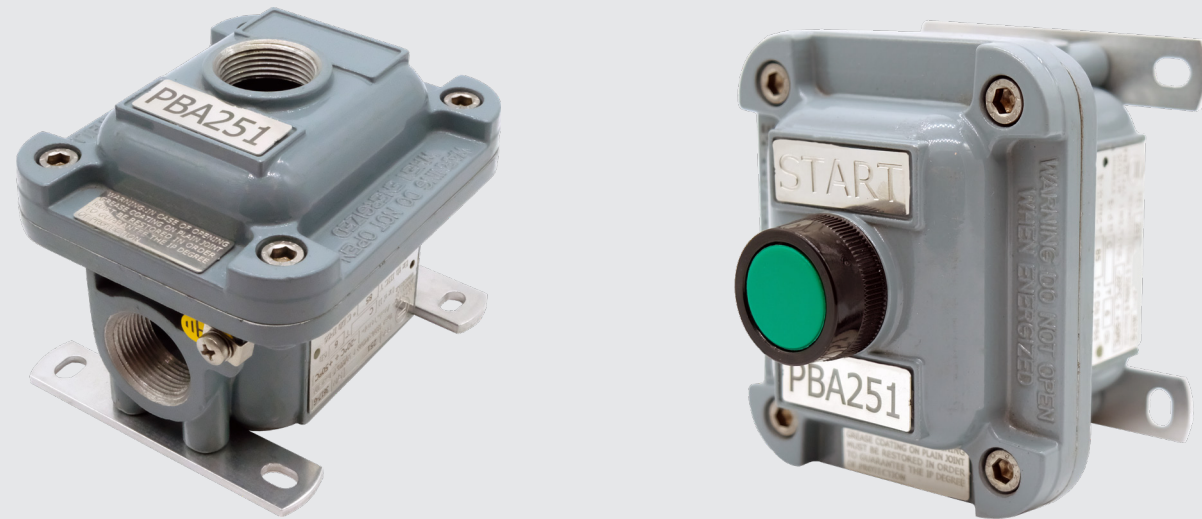


PBA 21 / 251

Pushbutton and control station with one unit.
The equipment can install different type of units like pushbutton or signalling units.



Features

- Material used:** alluminium low copper grade
- Max ambient temperature:** -50°C up to 80°C
- NPT thread:** 3/4" NPT
- ISO 262 thread:** M25x1.5
- Degree of protection:** IP66
- Max rated voltage:** 690Vac/440Vdc

- AC1 max current value:** 10A
- AC15 max current value:** 4A
- Cable section:** 1,5 ÷ 2,5 mmq
- Nominal frequency:** 50/60Hz
- External painting:** grey RAL7000

Code	ØA
PBA251	M25x1.5 - 6H
PBA21	3/4" NPT

(*) Length of unit may vary

ATEX & IECEx Equipment Data		
Gas	Group I Zone 1	Ex db IIC T6 Gb
Dust	Group II Zone 21	Ex tb IIIC T85°C Db IP66
Tamb: -20°C ÷ +40°C		
ATEX Certificate		IECEx Certificate
BVI 15 ATEX 0074		IECEx EPS 15.0070