











CABLE ENTRIES POSITION

LATERAL ENTRIES					
CODE:	RI	RLI	RCI	RTI	RXI
	N° entries= 1	N° entries= 2		N° entries= 3	N° entries= 4
SCHEME:					

LATERAL AND BOTTOM ENTRIES					
CODE:	RBI	RMI	RDI	RWI	RXAI
	N° entries= 2	N° entries= 3		N° entries= 4	N° entries= 5
SCHEME:					

EQUIPMENT IDENTIFICATION

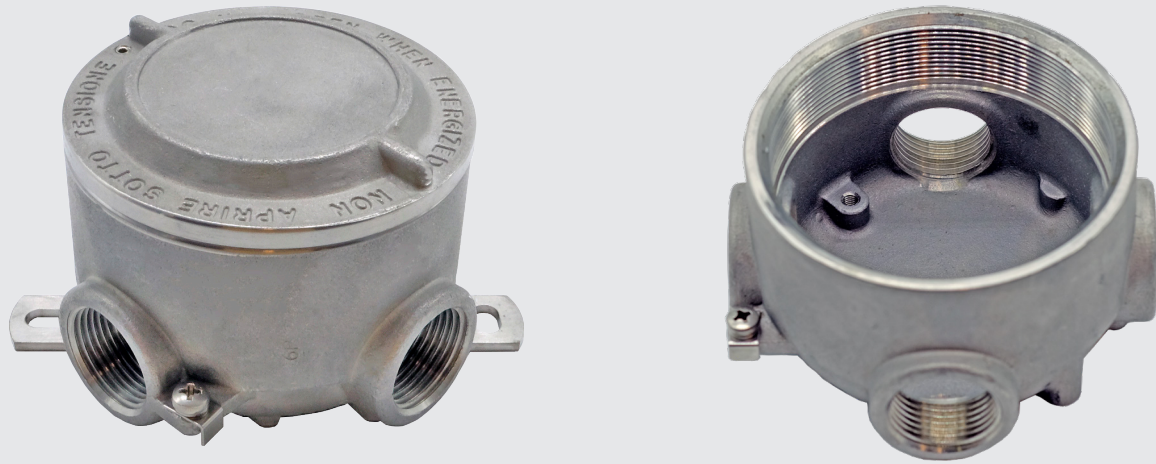
ORDER CODING				
Code	Cable entry dimension	Box dimension	Max internal dimension (with extension)	Model
R..I	1,2,3,4,5,6 20,25,32,40,50,63 See table below	6	120	See table at page 30
		6A	125	
		7	145	
		8	125 - 165	
		9	140 - 190	

CABLE ENTRY DIMENSION	
Code	Cable entry dimension
1	1/2" NPT
2	3/4" NPT
3	1" NPT
4	1.1/4" NPT
5	1.1/2" NPT
6	2" NPT
20	M20x1.5
25	M25x1.5
32	M32x1.5
40	M40x1.5
50	M50x1.5
63	M63x1.5

Example: ROTI26-120MM

RI SERIES – EX COMPONENT

Ex component boxes series RI, RO are empty enclosure supplied without any electrical equipment installed. They are not intended to be used alone and require additional certificate when incorporated into equipment or systems.



Features

Material used: stainless steel AISI 316L

Operating temperature: -50°C up to 85°C

NPT thread: from 1/2" to 2"

ISO 262 thread: from M20x1.5 5 to M63x1.5

Degree of protection: IP66

Max rated voltage: 690Vac/440Vdc

Max rated current: 109A

Cross section: 0,5 ±35 mmq

Nominal frequency: 50/60Hz

ATEX & IECEx Equipment Data

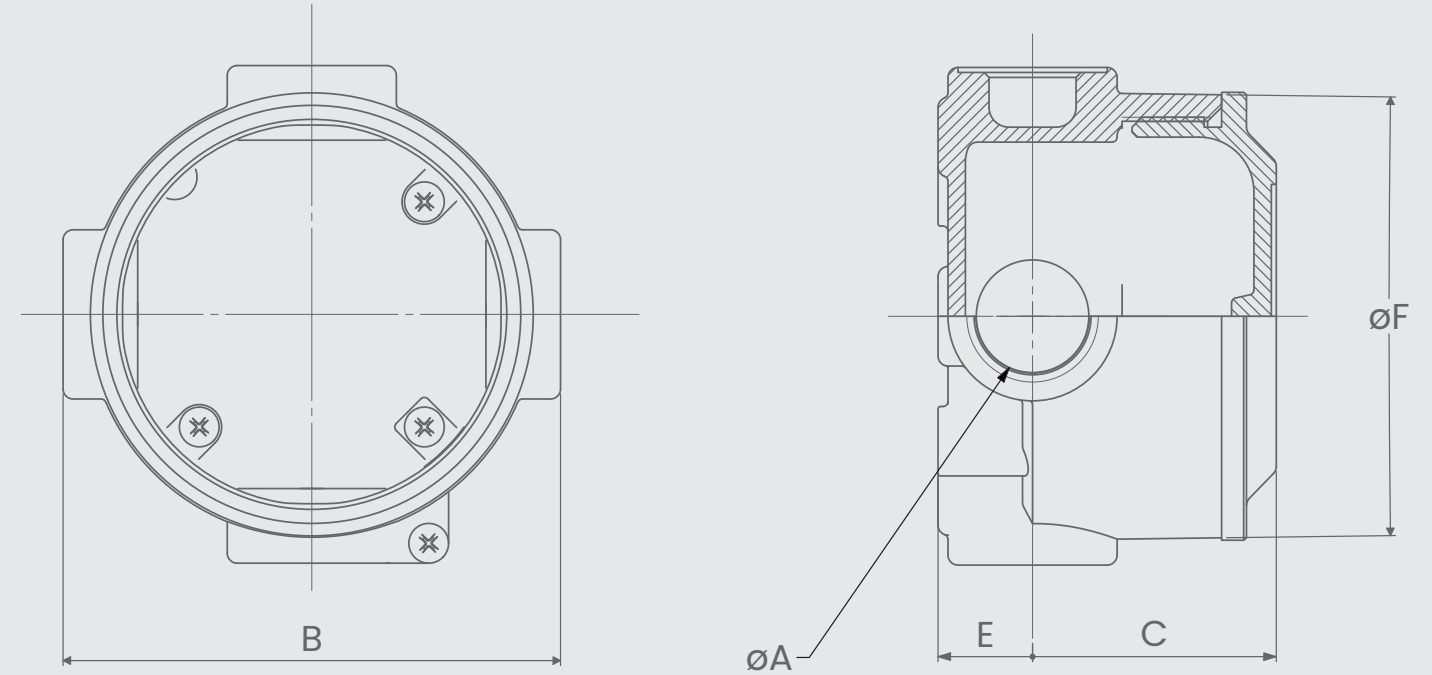
Gas	Group II Zone 1	Ex db I Mb Ex db II C T(*) Gb
Dust	Group II Zone 21	Ex tb IIIC T(*) Db IP66

ATEX Certificate

FTZU 13 ATEX 0201U

IECEx Certificate

IECEx FTZU 14.0055U



Box dimension	External dimensions [mm]				Weight [Kg]
	B	C	E	øF	
6	100	68	22,5	90	1,25
6A	100	73	22,5	90	1,3
7	126	82	24	112	2,2
8	145	99	27	131	3,5
9	161	115	27	146	4,4

øA = See table at page 41